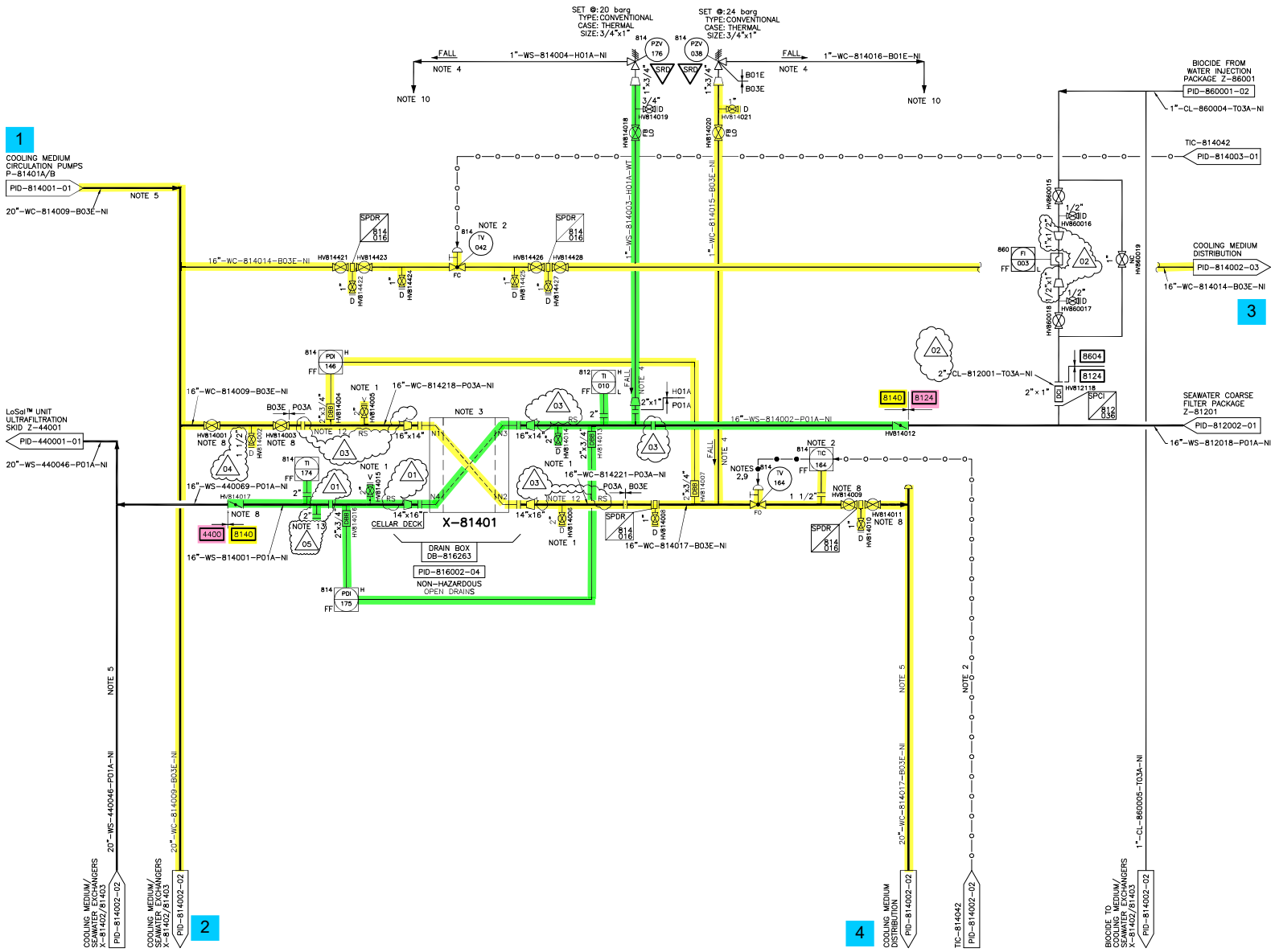


Sheet No. CLB-FC-0X-PR-PID-814002-01

X-81401			
COOLING MEDIUM/SEAWATER EXCHANGER			SEAWATER
DUTY	NOTE 3	MW	33.6
DESIGN PRESSURE	barq	24	20
DESIGN TEMPERATURE	°C	80/-10	30/-10
OPERATING PRESSURE IN/OUT	barq	17.6/16.6	9/8
OPERATING TEMPERATURE IN/OUT	°C	49/20	5-12.5/30



- GENERAL NOTES:**
- REFER TO LEGEND SHEETS CLB-FC-0X-PR-PID-000001-01 TO 000013-11 FOR SYMBOLS, ABBREVIATIONS, SYSTEM CODES, INSTRUMENTATION DETAILS, ACTUATED VALVE CONFIGURATIONS, EQUIPMENT STANDARD HOOK-UPS, SAMPLING AND HOSE STATION DETAILS.
 - ALL P&ID NUMBERS SHOWN IN CONTINUATION FLAGS ARE PREFIXED WITH "CLB-FC-0X-PR-" UNLESS STATED OTHERWISE.
 - ALL EQUIPMENT TAG NUMBERS ARE PREFIXED WITH "CLB-" AS SITE IDENTIFIER FOR CLAIR RIDGE. FOR MAXIMO ONLY BUT NOT USED FOR PHYSICAL IDENTIFICATION OR ON P&ID'S.
 - REFER TO ALARM RESPONSE MANUAL - TOPSIDES (DOC. No. CLB-FC-0X-PR-SCH-0003) FOR PRE-ALARMS AND TRIPS SETTING.
 - ALL NON-SIS AND NON-WIRELESS INSTRUMENTS SHALL BE FOUNDATION FIELDBUS (FF) UNLESS SPECIFIED OTHERWISE.
- SPECIFIC NOTES:**
- VALVED CONNECTION IS PROVIDED FOR VENTING, DRAINING, FLUSHING AND CLEANING OF EXCHANGER. CONNECTIONS LOCATED OVER DRIP TRAY.
 - THE ONLINE X-81401/2/3 EXCHANGER TEMPERATURE CONTROL VALVES (TV-814164, TV-814165 OR TV-814166) START TO CLOSE-IN ON FALLING COOLING MEDIUM TEMPERATURE AS THE BYPASS TEMPERATURE CONTROL VALVE TV-814042 OPENS.
 - 3 x 50% EXCHANGER CONFIGURATION.
 - MINIMUM SLOPE 1:400, NO POCKETS.
 - COOLING MEDIUM AND SEAWATER INLET AND OUTLET PIPEWORK TO AND FROM X-81401/2/3 TO BE AS SYMMETRICAL AS POSSIBLE.
 - DELETED.
 - VALVE TO BE CONTROLLED PROCEDURALLY SO AS TO ENSURE THAT 2x03 EXCHANGERS ARE ON-LINE AT ALL TIMES.
 - MECHANICAL MINIMUM STOP TO BE INSTALLED IN ORDER TO ENSURE THE DUTY P-81401-A/B PUMP MINIMUM FLOW REQUIREMENT IS PROVIDED.
 - ROUTE DISCHARGE TO RESPECTIVE EXCHANGER BUND/DRIP TRAY.
 - DELETED.
 - GRP LINE TO ELIMINATE GALVANIC CORROSION BETWEEN EXCHANGER AND LTCS PIPEWORK.
 - PIPING LOW POINT.

HOLDS:

1. VALVED CONNECTION IS PROVIDED FOR VENTING, DRAINING, FLUSHING AND CLEANING OF EXCHANGER. CONNECTIONS LOCATED OVER DRIP TRAY.

2. THE ONLINE X-81401/2/3 EXCHANGER TEMPERATURE CONTROL VALVES (TV-814164, TV-814165 OR TV-814166) START TO CLOSE-IN ON FALLING COOLING MEDIUM TEMPERATURE AS THE BYPASS TEMPERATURE CONTROL VALVE TV-814042 OPENS.

3. 3 x 50% EXCHANGER CONFIGURATION.

4. MINIMUM SLOPE 1:400, NO POCKETS.

5. COOLING MEDIUM AND SEAWATER INLET AND OUTLET PIPEWORK TO AND FROM X-81401/2/3 TO BE AS SYMMETRICAL AS POSSIBLE.

6. DELETED.

7. VALVE TO BE CONTROLLED PROCEDURALLY SO AS TO ENSURE THAT 2x03 EXCHANGERS ARE ON-LINE AT ALL TIMES.

8. MECHANICAL MINIMUM STOP TO BE INSTALLED IN ORDER TO ENSURE THE DUTY P-81401-A/B PUMP MINIMUM FLOW REQUIREMENT IS PROVIDED.

9. ROUTE DISCHARGE TO RESPECTIVE EXCHANGER BUND/DRIP TRAY.

10. DELETED.

11. GRP LINE TO ELIMINATE GALVANIC CORROSION BETWEEN EXCHANGER AND LTCS PIPEWORK.

12. PIPING LOW POINT.

For use with:
PRO-0046
Appendices 8.2

Reference drawings	Rev	Drawing title

Rev	Description	Drawn by	Checked by	Issued by	Date	Scale
C3	APPROVED FOR CONSTRUCTION	KY	DT	EC	BM	1:300N 13
C2	APPROVED FOR CONSTRUCTION	GH	AH	DT	BM	1:300N 12
C1	APPROVED FOR CONSTRUCTION	GH	DT	EC	BM	1:300N 11
B3	APPROVED FOR USE - HAZOP REVIEW	GH	DT	CLC	BM	1:300N 11
B2	APPROVED FOR USE	GH	NK	CJG	BM	1:400N 11
B1	APPROVED FOR DESIGN	NK	SR	NK	BM	2:25P10

Please check scale bar before scaling this drawing

Contract	BP CLAIR RIDGE 20254	Scale	(at full size) NTS
Unit	QU PLATFORM	Drawn	Checked
Title	PIPING AND INSTRUMENT DIAGRAM COOLING MEDIUM/SEAWATER EXCHANGER X-81401	Drawn by	Checked by
Drawn No.	CLB-FC-0X-PR-PID-814002-01	Sheet	Rev.
		C3	